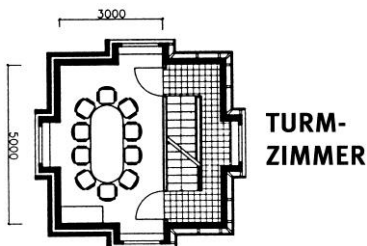
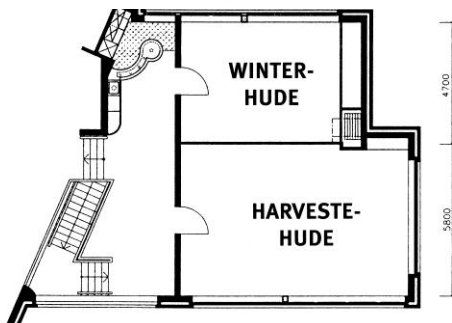
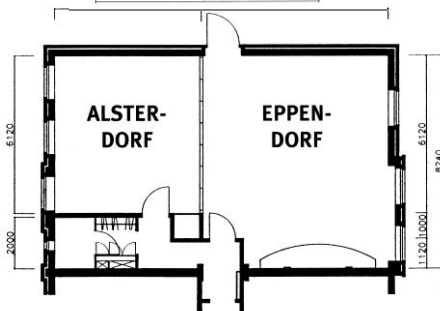
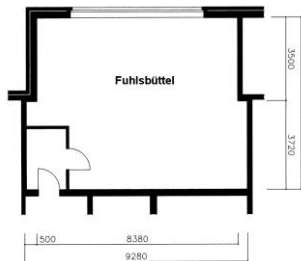




PREMIER

BEST WESTERN®

| Conference room | Room size | U-Shape | Banqueting | Poser Tables | Parliament | Block | Theater Style | Air condition | Daylight |
|---------------------------|------------------|---------|------------|--------------|------------|-------|---------------|---------------|----------|
| Alsterdorf | 34m ² | 10 | 16 | 20 | 12 | 16 | 20 | Yes | Yes |
| Eppendorf | 62m ² | 20 | 25 | 30 | 20 | 20 | 40 | Yes | Yes |
| Alsterdorf & Eppendorf | 96m ² | 34 | 50 | 60 | 50 | 30 | 60 | Yes | Yes |
| Winterhude | 30m ² | 9 | - | 20 | 10 | 13 | 16 | Yes | Yes |
| Harvestehude | 50m ² | 20 | 20 | 30 | 20 | 20 | 30 | Yes | Yes |
| Winterhude & Harvestehude | 80m ² | 25 | 35 | 50 | 35 | 25 | 50 | Yes | Yes |
| Fuhlsbüttel | 56m ² | 20 | 25 | 40 | 25 | 20 | 40 | Yes | Yes |
| Turmzimmer | 16m ² | - | - | 8 | - | 6 | - | Yes | Yes |



Alsterkrug Hotel
HAMBURG

Alsterkrug Hotel GmbH & Co. KG · Alsterkrugchaussee 277 · 22297 Hamburg

Telefon: +49 (0)40 51 303 0 · Telefax: +49 (0)40 51 303 403 · info@alsterkrug.de · www.alsterkrug-hotel.de

Geschäftsführer: Frank Pentzin, Jost Pentzin, Ernstotto Pentzin · USt-IdNr. DE 118981252 · p.h.G. Verwaltungsgesellschaft Alsterkrug Hotel mbH · HRB 32934 · HRA 80097

Commerzbank AG Hamburg · SWIFT/BIC: DRESDEFF200 · IBAN: DE28 2008 0000 0373 9910 01

Each Best Western® branded hotel is independently owned and operated.



PREMIER

BEST WESTERN®

Daily Delegate Package „All Day Coffee-Business“

Includes the following:

- Coffee provided on arrival, including fruit basket
- 2x refreshments including a different range of snacks each day
- Lunch: Choose three courses from our menu including mineral water and apple juice unlimited
- Unlimited soft and hot drinks in the meeting room
- Standard technical equipment including projector and high-speed WiFi
- Provision of conference room (size depends on number of participants and is subject to a minimum charge)
- Personal conference service

€ 58.50 per person/day

Daily Delegate Package „Alsterkrug Complete“

Includes the following:

- Coffee provided on arrival, including fruit basket
- 2x refreshments including a different range of snacks each day
- Lunch: Choose three courses from our menu including mineral water and apple juice unlimited
- Unlimited soft and hot drinks in the meeting room
- Dinner: Choose three courses from our menu including soft drinks, beer and wine
- Standard technical equipment including projector and high-speed WiFi
- Provision of conference room (size depends on number of participants and is subject to a minimum charge)
- Personal conference service

€ 89.00 per person/day

Daily Delegate Package „Alsterkrug Half Time incl. Drinks“

Includes the following:

- Coffee provided on arrival, including fruit basket
- 1x refreshments including different range of snacks each day
- Lunch or dinner: Choose three courses from our menu including mineral water and apple juice unlimited
- Unlimited soft drinks in the meeting room
- Standard technical equipment including projector and high-speed WiFi
- Provision of conference room (size depends on number of participants and is subject to a minimum charge)
- Personal conference service

€ 49.50 per person/day



Alsterkrug Hotel GmbH & Co. KG · Alsterkrugchaussee 277 · 22297 Hamburg

Telefon: +49 (0)40 51 303 0 · Telefax: +49 (0)40 51 303 403 · info@alsterkrug.de · www.alsterkrug-hotel.de

Geschäftsführer: Frank Pentzin, Jost Pentzin, Ernstotto Pentzin · USt-IdNr. DE 118981252 · p.h.G. Verwaltungsgesellschaft Alsterkrug Hotel mbH · HRB 32934 · HRA 80097

Commerzbank AG Hamburg · SWIFT/BIC: DRESDEFF200 · IBAN: DE28 2008 0000 0373 9910 01

Each Best Western® branded hotel is independently owned and operated.

Minimum consumption per day

| | | |
|----------------------|---------|----------|
| Alsterdorf | (34sqm) | € 350.00 |
| Eppendorf | (62sqm) | € 750.00 |
| Alster-/Eppendorf | (96sqm) | € 990.00 |
| Fuhlsbüttel | (56sqm) | € 650.00 |
| Winterhude | (30sqm) | € 350.00 |
| Harvestehude | (54sqm) | € 750.00 |
| Winter-/Harvestehude | (80sqm) | € 990.00 |
| Turmzimmer | (16sqm) | € 220.00 |

Food and beverage, also the daily delegate package, will be credit to the minimum consumption. A difference will be charged as a room rate.

Additional technical equipment

| | |
|----------------------|----------------------|
| - Flipchart | € 18.00 per unit/day |
| - Pinboard | € 15.00 per unit/day |
| - TV/DVD | € 80.00 per unit/day |
| - Multimedia speaker | € 20.00 per unit/day |
| - Music system | € 40.00 per unit/day |
| - Moderator's case | € 30.00 per unit/day |

Dinner

- We organize your individual dinner; please ask for our menu selection
- Printout of your menu € 1.00 per unit

Overnight stay

- By booking one of our daily delegate packages your accommodation is bookable for a special rate

Conference final

Reserve our skittle alley for a sporty and team building event or ask for our event selection to experience a very special conference final.

**We are looking forward to welcoming you soon
at the Best Western Premier Alsterkrug Hotel.**

Event – Team
 Tel.: +49 (0)40-51303404
 Fax: +49 (0)40-51303403
 Email: bankett@alsterkrug.de

