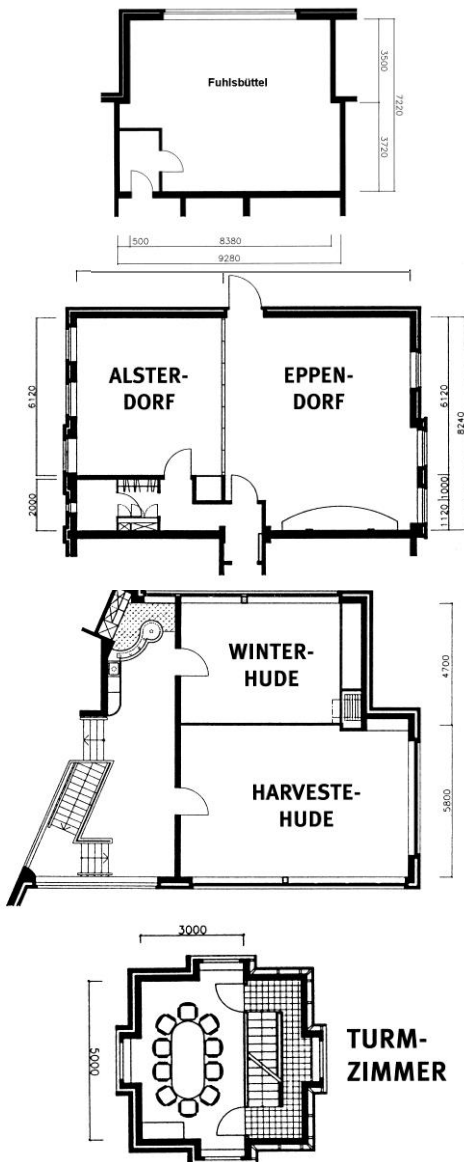




PREMIER

BEST WESTERN®

Conference room	Room size	U-Shape	Banqueting	Poser Tables	Parliament	O-Shape	Theater Style	Air condition	Daylight
Alsterdorf	34m ²	10	16	-	13	10	-	Yes	Yes
Eppendorf	62m ²	16	25	-	25	18	-	Yes	Yes
Alsterdorf & Eppendorf	96m ²	26	40	-	50	26	-	Yes	Yes
Winterhude	30m ²	11	-	-	11	10	-	Yes	Yes
Harvestehude	54m ²	19	20	-	23	18	-	Yes	Yes
Winterhude & Harvestehude	84m ²	23	35	-	38	24	-	Yes	Yes
Fuhlsbüttel	56m ²	16	25	-	25	16	-	Yes	Yes
Turmzimmer	16m ²	-	-	-	-	6	-	Yes	Yes



Alsterkrug Hotel GmbH & Co. KG · Alsterkrugchaussee 277 · 22297 Hamburg
 Telefon: +49 (0)40 51 303 0 · Telefax: +49 (0)40 51 303 403 · info@alsterkrug.de · www.alsterkrug-hotel.de
 Geschäftsführer: Frank Pentzin, Jost Pentzin, Ernstotto Pentzin · USt-IdNr. DE 118981252 · p.h.G. Verwaltungsgesellschaft Alsterkrug Hotel mbH · HRB 32934 · HRA 80097
 Commerzbank AG Hamburg · SWIFT/BIC: DRESDEFF200 · IBAN: DE28 2008 0000 0373 9910 01

Each Best Western® branded hotel is independently owned and operated.

Conference Package „Alsterkrug Business“

Includes the following:

- Coffee provided on arrival, including fruit basket
- 2x refreshments including a different range of snacks each day
- Lunch: Choose three courses from our menu including mineral water and apple juice unlimited
- Unlimited soft and hot drinks in the meeting room
- Standard technical equipment including projector and high-speed WiFi
- Provision of conference room (size depends on number of participants and is subject to a minimum charge)
- Personal conference service

€ 59.90 per person/day

Conference Package „Alsterkrug Complete“

Includes the following:

- Coffee provided on arrival, including fruit basket
- 2x refreshments including a different range of snacks each day
- Lunch: Choose three courses from our menu including mineral water and apple juice unlimited
- Unlimited soft and hot drinks in the meeting room
- Dinner: Choose three courses from our menu including soft drinks, beer and wine
- Standard technical equipment including projector and high-speed WiFi
- Provision of conference room (size depends on number of participants and is subject to a minimum charge)
- Personal conference service

€ 94.90 per person/day

Conference Package „Alsterkrug Halftime“

Includes the following:

- Coffee provided on arrival, including fruit basket
- 1x refreshment including different range of snacks each day
- Lunch or dinner: Choose three courses from our menu including mineral water and apple juice unlimited
- Unlimited soft and hot drinks in the meeting room
- Standard technical equipment including projector and high-speed WiFi
- Provision of conference room (size depends on number of participants and is subject to a minimum charge)
- Personal conference service

from € 52.90 per person/day



Minimum consumption per day

Alsterdorf	(34sqm)	€ 350.00
Eppendorf	(62sqm)	€ 750.00
Alster-/Eppendorf	(96sqm)	€ 990.00
Fuhlsbüttel	(56sqm)	€ 650.00
Winterhude	(30sqm)	€ 350.00
Harvestehude	(54sqm)	€ 750.00
Winter-/Harvestehude	(84sqm)	€ 990.00
Turmzimmer	(16sqm)	€ 250.00

Food and beverage, also the conference package, will be credit to the minimum consumption. A difference will be charged as a room rate.

Additional technical equipment

- Flipchart	€ 19.00 per unit/day
- Pinboard	€ 15.00 per unit/day
- TV/DVD	€ 80.00 per unit/day
- Multimedia speaker	€ 20.00 per unit/day
- Music system	€ 40.00 per unit/day
- Moderator's case	€ 30.00 per unit/day

Dinner

- We organize your individual dinner; please ask for our menu selection
- Printout of your menu € 1.00 per unit

Overnight stay

- By booking one of our daily delegate packages your accommodation is bookable for a special rate

Conference final

Reserve our skittle alley for a sporty and team building event or ask for our event selection to experience a very special conference final.

**We are looking forward to welcoming you soon
at the Best Western Premier Alsterkrug Hotel.**

Event – Team
 Tel.: +49 (0)40-51303404
 Fax: +49 (0)40-51303403
 Email: bankett@alsterkrug.de

