





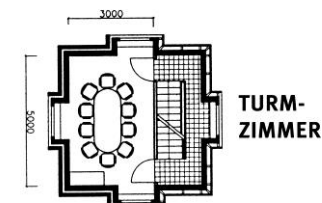
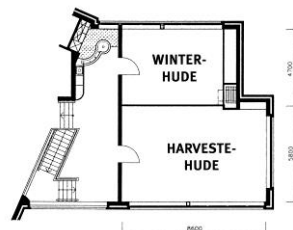
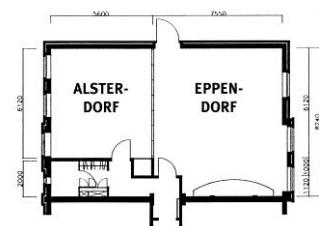
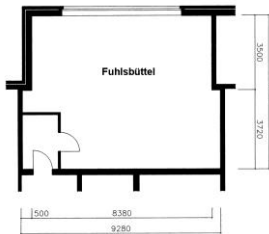



PREMIER
BEST WESTERN®

Conference room	Size	 U-Shape	 Parliament	 Central Table	 Rows	 Dinner	 Reception
Alsterdorf	36m ²	12	13	14	20	16	20
Eppendorf	64m ²	20	25	20	40	25	30
Alsterdorf & Eppendorf	100m ²	34	50	34	60	50	60
Winterhude	30m ²	11	11	13	16	-	20
Harvestehude	54m ²	20	23	24	30	20	30
Winterhude & Harvestehude	84m ²	26	38	30	50	35	50
Fuhsbüttel	56m ²	20	25	20	40	25	40
Turmzimmer	16m ²	-	-	6	-	-	8

All our conference rooms are air-conditioned and have daylight.



Say Moin - to Meetings & Events



Alsterkrug Hotel GmbH & Co. KG · Alsterkrugchaussee 277 · 22297 Hamburg
 Telefon: +49 (0)40 51 303 0 · Telefax: +49 (0)40 51 303 403 · info@alsterkrug.de · www.alsterkrug-hotel.de
 Geschäftsführer: Frank Pentzin, Jost Pentzin, Ernstotto Pentzin · USt-IdNr. DE 118981252 · p.h.G. Verwaltungsgesellschaft Alsterkrug Hotel mbH · HRB 32934 · HRA 80097
 Commerzbank AG Hamburg · SWIFT/BIC: DRESDEFF200 · IBAN: DE28 2008 0000 0373 9910 01

Each Best Western® branded hotel is independently owned and operated.



PREMIER

BEST WESTERN®

Conference package „Business“

Includes the following:

- Welcome coffee including fruit basket
- 2x coffee break in the morning & afternoon with a variety of 3 snacks
- Lunch: 3-course menu at choice according to the chef including unlimited table water & apple spritzer
- Soft drinks and coffee/tea unlimited during the conference
- Conference equipment included (beamer, pinboard, flipchart & writing materials)
- Highspeed WLAN im gesamten Hotel
- Provision of conference room
(Size according to number of participants & is subject to a minimum consumption)
- Personal conference service

from 82.00 € per person/day

Conference package „Economy“ *available for up to 4 hours*

Includes the following:

- Welcome coffee including fruit basket
- 1x morning coffee break **or** afternoon coffee break with a variety of 3 snacks
- Lunch: 3-course menu at choice according to the chef including unlimited table water & apple spritzer
- or**
- Dinner: 3-course menu at choice according to the chef Including one beverage at choice (soft drink, beer or wine)
- Soft drinks and coffee/tea unlimited during the conference
- Conference equipment included (beamer, pinboard, flipchart & writing materials)
- Highspeed WLAN im gesamten Hotel
- Provision of conference room
(Size according to number of participants & is subject to a minimum consumption)
- Personal conference service

from 69.00 € per person/day

Conference package „Complete“

Includes the following:

- Welcome coffee including fruit basket
- 2x coffee break in the morning & afternoon with a variety of 3 snacks
- Lunch: 3-course menu at choice according to the chef including unlimited table water & apple spritzer
- Soft drinks and coffee/tea unlimited during the conference
- Dinner: 3-course menu at choice according to the chef Including one beverage at choice (soft drink, beer or wine)
- Conference equipment included (beamer, pinboard, flipchart & writing materials)
- Highspeed WLAN im gesamten Hotel
- Provision of conference room
(Size according to number of participants & is subject to a minimum consumption)
- Personal conference service

from 120.00 € per person/day

Say Moin - to Meetings & Events



Alsterkrug Hotel GmbH & Co. KG · Alsterkrugchaussee 277 · 22297 Hamburg

Telefon: +49 (0)40 51 303 0 · Telefax: +49 (0)40 51 303 403 · info@alsterkrug.de · www.alsterkrug-hotel.de

Geschäftsführer: Frank Pentzin, Jost Pentzin, Ernstotto Pentzin · USt-IdNr. DE 118981252 · p.h.G. Verwaltungsgesellschaft Alsterkrug Hotel mbH · HRB 32934 · HRA 80097

Commerzbank AG Hamburg · SWIFT/BIC: DRESDEFF200 · IBAN: DE28 2008 0000 0373 9910 01

Each Best Western® branded hotel is independently owned and operated.



PREMIER

BEST WESTERN®

Minimum consumption per day

Alsterdorf	(36m ²)	550.00 €	Food and beverage, as well as the conference package, will be credit to the minimum consumption. A difference will be charged as room rent.
Eppendorf	(64m ²)	1000.00 €	
Alster-/Eppendorf	(100m ²)	1500.00 €	
Fuhlsbüttel	(56m ²)	900.00 €	
Winterhude	(30m ²)	550.00 €	
Harvestehude	(54m ²)	1000.00 €	
Winter-/Harvestehude	(84m ²)	1500.00 €	
Turmzimmer	(16m ²)	400.00 €	

Additional conference equipment

- Beamer 80.00 € each per day
- Pinboard 25.00 € each per day
- Flipchart 30.00 € each per day
- Speakers 25.00 € each per day
- Music system 40.00 € each per day
- Presentation case 35.00 € each per day

Overnight stay

By booking of one of our conference packages your accomodation is bookable for a special rate.

Say Moin - to Meetings & Events



Alsterkrug Hotel GmbH & Co. KG · Alsterkrugchaussee 277 · 22297 Hamburg
Telefon: +49 (0)40 51 303 0 · Telefax: +49 (0)40 51 303 403 · info@alsterkrug.de · www.alsterkrug-hotel.de
Geschäftsführer: Frank Pentzin, Jost Pentzin, Ernstotto Pentzin · USt-IdNr. DE 118981252 · p.h.G. Verwaltungsgesellschaft Alsterkrug Hotel mbH · HRB 32934 · HRA 80097
Commerzbank AG Hamburg · SWIFT/BIC: DRESDEFF200 · IBAN: DE28 2008 0000 0373 9910 01

Each Best Western® branded hotel is independently owned and operated.